

±107,890 SF Available

Warehouse/Distribution/Light Manufacturing

Convenient to the growing Port of Panama City

The only Property Available in the Market able to Accomodate a 30,000 SF or Larger Industrial Warehouse Requirement



9 ROLL-UP DOORS

4 DOCK-HIGH
5 GRADE-LEVEL



3P W/ OVER 2,000 AMPS

POWER (3-PHASE)



24.0'

CLEAR HEIGHT



FIRE SUPPRESSION

WET PIPE SPRINKLER SYSTEM



MASONRY & STEEL FRAME

STRUCTURE



50+ SPACES

PARKING



8"

FLOOR LOAD

Contact Us

Tom Watson

Senior Vice President

+1 850 527 3524

thomas.watson@cbre.com

Elizabeth Forsythe

Vice President

+1 850 585 5290

elizabeth.forsythe@cbre.com

Sam Herrera

Associate

+1 714 227 3829

sam.herrera@cbre.com

±107,890 SF Industrial Opportunity
 909 W. 39th Street | Panama City, FL 32405

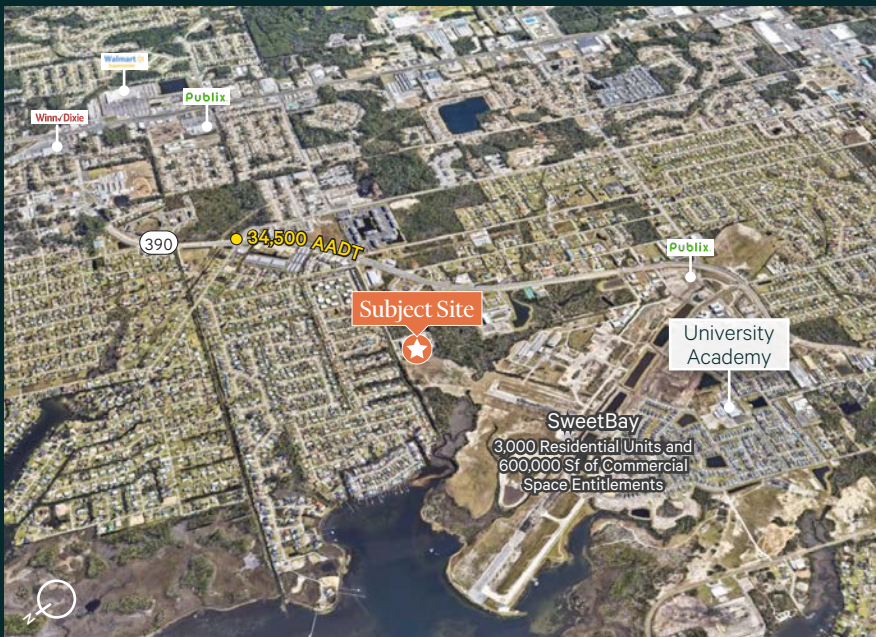


Summary

Lease Rate	Call for More Information
Lot Size	±12 AC
Year Built / Renovated	1980 / 2019
Zoning	Light Manufacturing
Floor & Exterior	Concrete
Roof	Pitched, Metal

Highlights

- + Adjacent to SweetBay, the redevelopment of former Panama City Airport, under development with over 3,000 residential units and 600,000 Sf of commercial space entitlements
- + Convenient to the market's major activity centers:
 - Port of Panama City;
 - Florida State University at Panama City;
 - Gulf Coast State College;
 - Tyndall Air Force Base
 - NSA (Naval Supply Activity – Naval Surface Warfare Center)
- + Other market catalysts spurring demand for space:
 - INSPIRE – FSU's aerospace technology research & development campus at NW FL Beaches Int'l Airport;
 - Continued development of the Bay-Walton Sector Plan, including Latitude Margaritaville (3,000+ residential units)
 - Tyndall Air Force Base's \$5 billion expansion;
 - Panama City Beach's tourism segment
- + Convenient access to Highway 20 and Interstate 10 north via SR-77 and US Hwy 231, and just a short drive to the famous Beaches of the Emerald Coast.

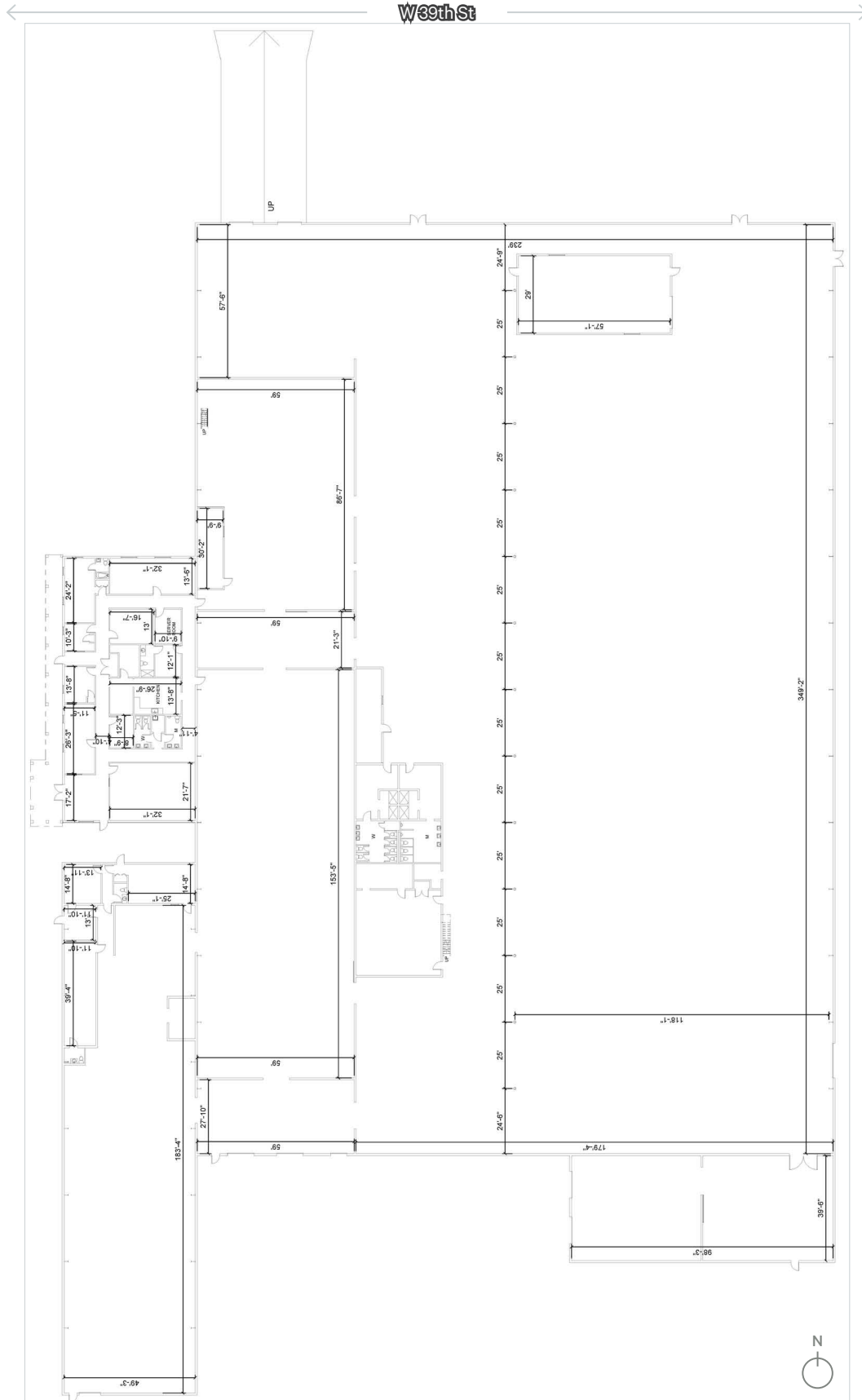


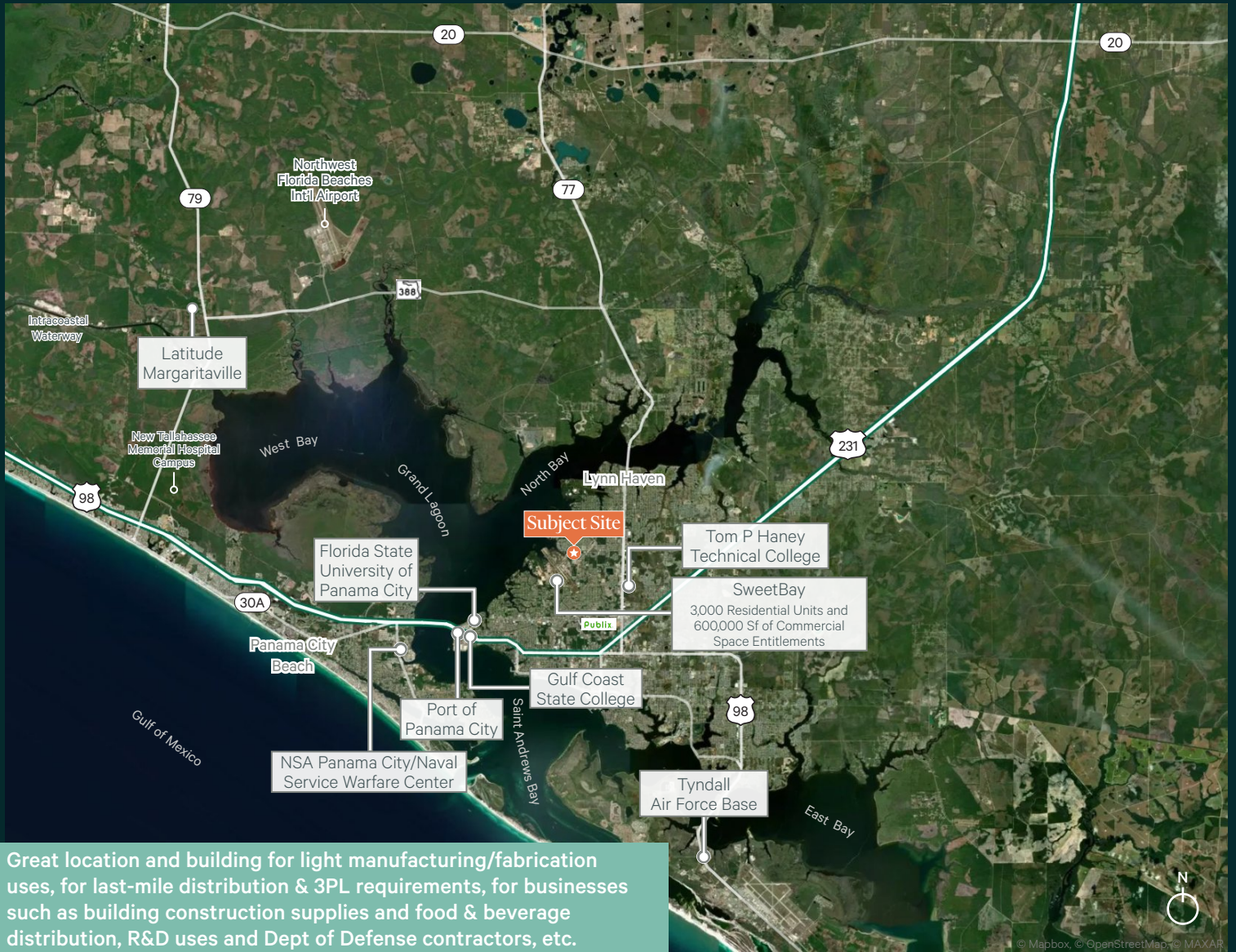
Floor Plan

±107,890 SF
PREMISES

±96,007 SF
WAREHOUSE
(OPTION TO SUBDIVIDE)

±6,537 SF
OFFICE





Great location and building for light manufacturing/fabrication uses, for last-mile distribution & 3PL requirements, for businesses such as building construction supplies and food & beverage distribution, R&D uses and Dept of Defense contractors, etc.

Panama City MSA Demographics

The Panama City MSA, with nearly 200,000 people, is the third largest city in the Florida Panhandle, following Pensacola and Tallahassee. It is located in the central panhandle, approximately 95 miles east of Pensacola and 100 miles southwest of Tallahassee. With its steady growth, its population is expected to exceed 200,000 by 2025. The city's unemployment rate of 3.4%, as of November 2024, is significantly below the national average of 4.2%. The major industries in the region are: Defense & Aerospace, Healthcare, and Tourism.



211,899
Population



\$9.50B
Gross Metro Product



Projected Growth
Top 20% in Rate of Population Growth in the US



Metropolitan
Statistical Area 17th Largest MSA in Florida



7 Waterfront Parks & Miles of Coastline



8 Military Bases Within 2 Hours



1.2+ Million Passengers Per Year (ECP)



3.4%
Unemployment Rate



\$95,557
Avg Household Income



200+ Acres of Parks & Rec



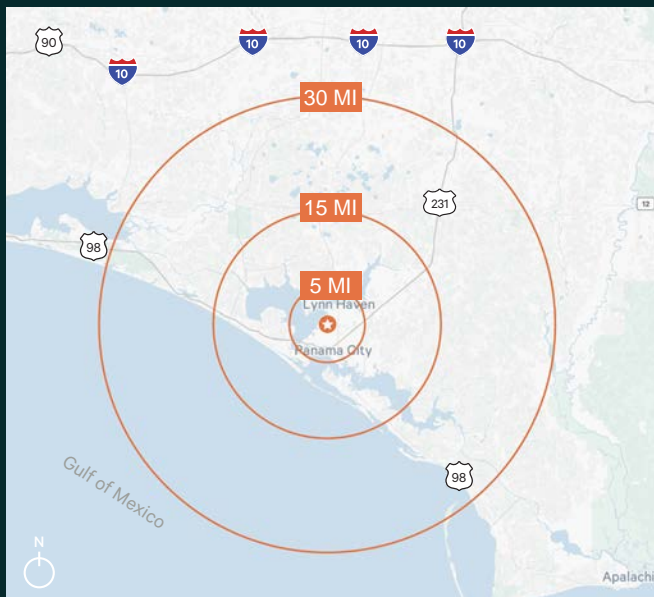
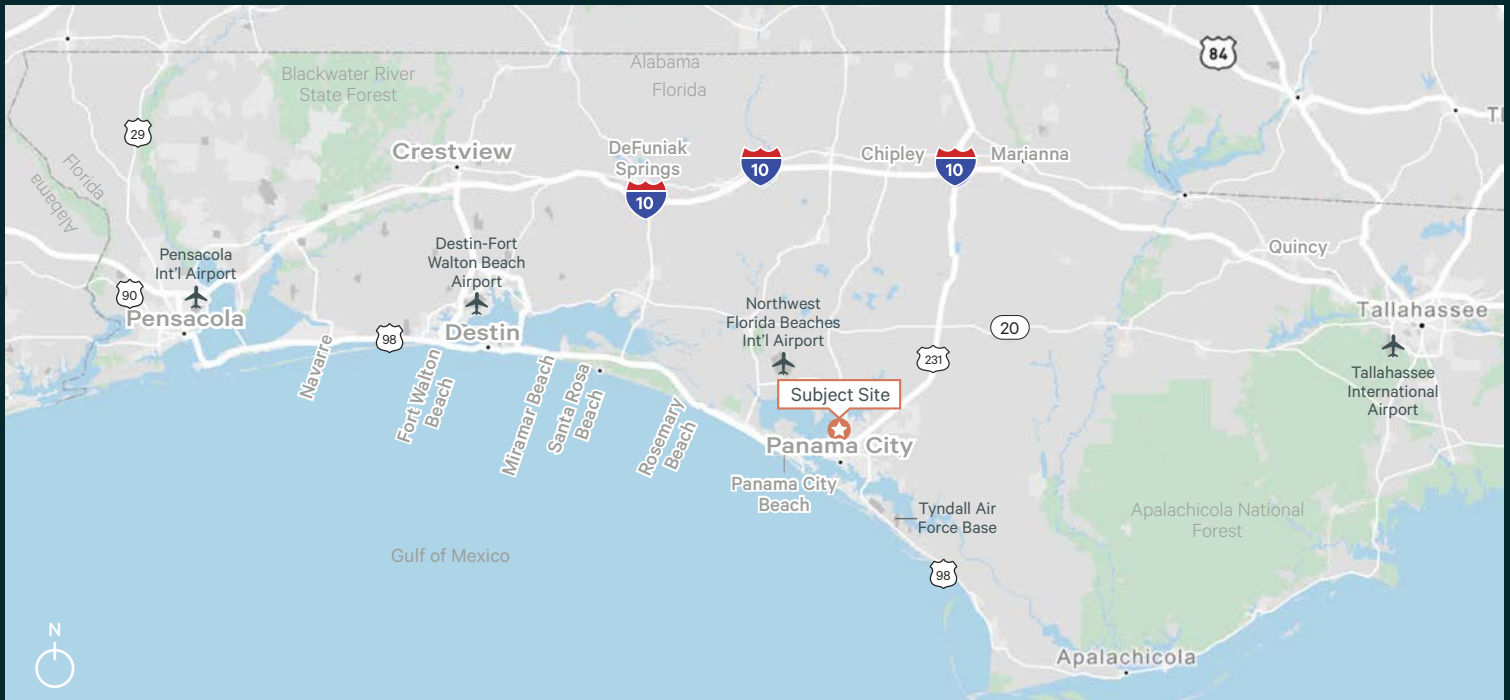
17+ Million Annual Visitors



Named The Best Place to Invest in Real Estate By Business 2.0 Magazine

±107,890 SF Industrial Opportunity
 909 W. 39th Street | Panama City, FL 32405

For Lease



Demographics	5 Miles	15 Miles	30 Miles
Population	70,348	173,281	219,253
Five-Year Projection	72,913	180,313	229,056
Housing Units	33,693	99,964	133,448
Avg Household Income	\$92,995	\$99,190	\$101,589
Median Age	41	42	43

Contact Us

Tom Watson
 Senior Vice President
 +1 850 527 3524
 thomas.watson@cbre.com

Elizabeth Forsythe
 Vice President
 +1 850 585 5290
 elizabeth.forsythe@cbre.com

Sam Herrera
 Associate
 +1 714 227 3829
 sam.herrera@cbre.com

© 2025 CBRE, Inc. All rights reserved. This information has been obtained from sources believed reliable, but has not been verified for accuracy or completeness. You should conduct a careful, independent investigation of the property and verify all information. Any reliance on this information is solely at your own risk. CBRE and the CBRE logo are service marks of CBRE, Inc. All other marks displayed on this document are the property of their respective owners, and the use of such logos does not imply any affiliation with or endorsement of CBRE. Photos herein are the property of their respective owners. Use of these images without the express written consent of the owner is prohibited.

