

TWO ONLINE AUCTIONS

AUCTION #1

Dependable Lease Services Asset Liquidation

TUESDAY, DECEMBER 5, 2017

15716 TX-146, Liberty, Texas 77575

AUCTION
#1



AUCTION #2

Log Energy Services Asset Liquidation

WEDNESDAY, DECEMBER 6, 2017

1237 Hoover St., Luling, Texas, 78648

AUCTION
#2



AUCTION
#1



AUCTION
#2



Orbitbid.com
A Miedema Company

Corporate Headquarters:
601 Gordon Industrial Court
Byron Center, MI 49315

Contact

Kurt Mingerink (616) 893-4346
Kurt@1800lastbid.com

Hib Kuiper (616) 299-8387
Hib@1800lastbid.com

REICH  BROTHERS

FOR DETAILED INFORMATION & TO BID VISIT ORBITBID.COM OR CALL 866-672-4806

AUCTION #1

Dependable Lease Services Asset Liquidation 15716 TX-146, Liberty, Texas 77575

TUESDAY, DECEMBER 5, 2017



PICKUP TRUCKS

- 2013 Dodge 3500 Pickup, 6.7 L Cummins Diesel, Dually, Steel Flatbed with Utility Rack and Toolboxes, 60,773 Miles
- 2013 Dodge 2500 Pickup, 6.7 L Cummins Diesel, Dually, Steel Flatbed with Toolboxes and Truck Bed Fuel Tank, 70,332 Miles
- 2013 Dodge 3500 Pickup, 6.7 L Cummins Diesel, Dually, Steel Flatbed with 5th Wheel Rails and Gooseneck Ball, 136,029 Miles
- 2013 Dodge 2500 Pickup, 6.7 L Cummins Diesel, 4x4, Long Bed, 140,740 Miles
- 2013 Dodge 3500 Pickup, 6.7 L Cummins Diesel, Steel Flatbed with Toolboxes and Utility Rack, 58,862 Miles
- 2013 Dodge 2500 Pickup, 6.7 L Cummins Diesel, Long Bed with Toolbox, 132,095 Miles
- 2012 Dodge 2500 Pickup, 6.7 L Cummins Diesel, Dually, Steel Flatbed with 5th Wheel Rails and Gooseneck Ball, 86,738 Miles
- 2009 Dodge 3500 Pickup, 5.7L Hemi V8 engine, 114" x 8' Steel Flatbed, Side and Bottom Toolboxes with 13.5' Utility rack, 125,362 Miles
- 2008 Dodge 3500 Pickup, 5.7 L Hemi V8 engine, 114" L x 8' W Steel flatbed with side and bottom toolboxes, 13.5' utility rack, 186,887 Miles
- 2008 Dodge 2500 Pickup, 5.7L Hemi V8, long bed, toolbox and fuel tank in bed, 154,388 Miles
- 2008 Dodge 2500 Pickup, 5.7L Hemi V8 engine, long bed, toolbox and fuel tank in bed, 152,996 Miles
- 2008 Dodge 3500 Pickup, 5.7 Liter Hemi V8 gas engine, 114" L x 94" W Steel flatbed, 179,344 Miles
- 2008 Ford F350 Pickup, 6.8 L Triton V10 engine, long box, 233,879 Miles
- 2007 Dodge 3500 Pickup, 5.7 L Hemi V8 engine, long bed, fuel tank and toolbox in bed, 196,812 Miles
- 2007 Dodge 3500 Pickup, 6.7 Turbo Diesel engine, dually, 192,078 Miles
- 2004 Dodge 3500 Pickup, 5.9L Turbo Diesel Cummins engine

HEAVY DUTY TRUCKS

- 2014 Freightliner Cascadia, Detroit Diesel DD13 12.8 L Turbo diesel engine, 500 HP, Eaton Fuller 10-speed manual transmission, Sleeper Cab, 452,401 Miles
- 2003 Mack Dump Truck, Mack A1350 Turbo diesel engine, 350 HP, Maxitorque 10-speed multireverse manual transmission, 15' steel hydraulic dump bed with electric tarp, 241,998 Miles
- 1995 Freightliner, CAT 3406, 14 L Turbo Diesel engine, Eaton Fuller 10-speed manual transmission, 802,514 Miles

TRAILERS

- 2014 20' Tandem Axle Utility Trailer
- 2012 Performance by Parker 19' Tandem Axle Utility Trailer

- 2005 Work and Play by Forest River 31' Toy Hauler RV
- 2004 40' Tandem Axle deck over gooseneck
- 2004 Fontaine Low Boy Trailer
- 1998 DACO Tandem axle deck over fifth wheel trailer
- 1997 48' MOV All deck over step deck fifth wheel trailer
- 1981 30' Tandem Axle deck over gooseneck
- 19' Tandem Axle Utility Trailer

BACKHOE LOADERS

- 2003 CAT 4160 Backhoe Loader, CAT 4 cylinder 4.2 L diesel engine, 87" bucket with bolt on cutting edge, 6' backhoe stick and 104" boom, 22.5" bucket with teeth, rear stabilizer jacks, ROPS
- CAT 420DIT Backhoe Loader, 4.2 L diesel engine, 5270 hours, 87" loader bucket with bolt on cutting edge, 6' backhoe stick with 104" boom, 22.5" bucket with teeth, rear stabilizer jacks, ROPS

EXCAVATORS

- 2008 Komatsu PC220LC-8 Excavator, Komatsu 6 cylinder turbo diesel 6.7L engine, 3872 hours, 31.5" metal tracks, 8.5' stick, 12' boom, 4' bucket with teeth, 64" L x 24" W manual thumb, JRB coupler control, heat, A/C, enclosed cab
- 2001 Komatsu PC78US Mini Excavator, Komatsu 4 cylinder turbo diesel 3.3 L engine, 3765 hours, 6.5 stick, 7.5' boom, 18" W rubber tracks, 29" W bucket with teeth, heat, A/C, enclosed cab
- 2006 Bobcat 331G Mini Excavator, 2.2 L Kubota 4 cylinder diesel engine, model V2203-M, 2299 hours, 2-speed transmission, 12.5 W" rubber tracks, 5' backfill blade, 47" stick, 94.5" boom, 24" W bucket with teeth, AUX hydraulics, ROPS
- 2006 Bobcat 331E Mini Excavator, 2.2 L 4 cylinder Kubota diesel engine, model V2203-M, 2021 hours, 2-speed transmission, 12" W rubber tracks, 5' backfill blade, 4' stick, 94" boom, 13.5" bucket, AUX hydraulics, ROPS

SKID STEER

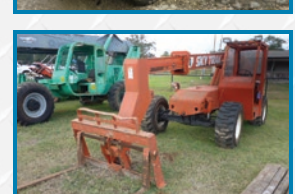
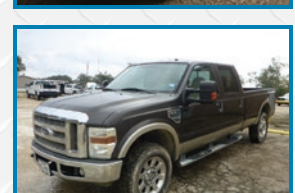
- 2005 Bobcat T190 Skid Steer, Kubota 4 cylinder, 2.0L turbo diesel engine, 2190 hours, 67" quick attach bucket with bolt on cutting edge, AUX quick attach hydraulics, 12.5" W rubber tracks, hydrostatic drive, 2-speed transmission

PUMP & PIPE TRAILER

- 25' Gator pump Trailer, single axle, steel frame, steel wheels, pin hitch, PTO driven, comes with hose
- 40' Pipe Trailer, 94" W with 19" tall side braces, fifth wheel dolly with pintle hitch, steel frame, spring suspension, steel wheels, 50 X 20.0-20 tires, air brakes

AIR COMPRESSOR

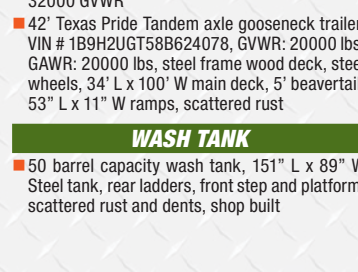
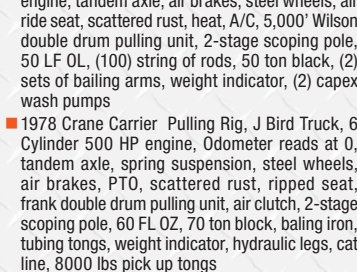
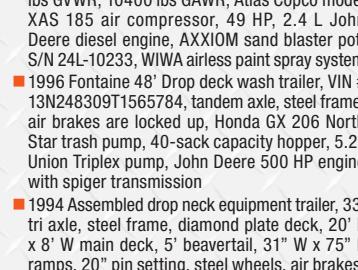
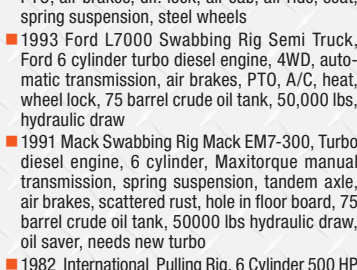
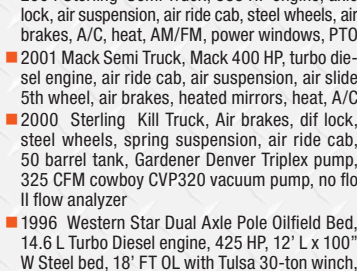
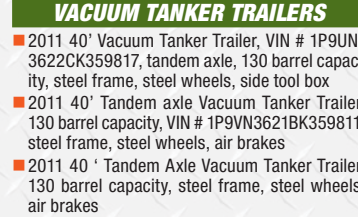
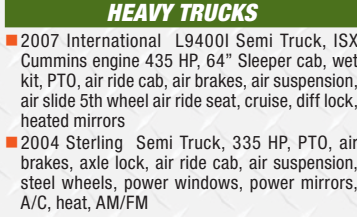
- 185 Ingersoll Rand Air Compressor, 4 cylinder John Deere engine



AUCTION #2

Log Energy Services Asset Liquidation 1237 Hoover St., Luling, Texas, 78648

WEDNESDAY, DECEMBER 6, 2017



HEAVY TRUCKS

- 2007 International L94001 Semi Truck, ISX Cummins engine 435 HP, 64" Sleeper cab, wet kit, PTO, air ride cab, air brakes, air suspension, air slide 5th wheel air ride seat, cruise, diff lock, heated mirrors
- 2004 Sterling Semi Truck, 335 HP, PTO, air brakes, axle lock, air ride cab, air suspension, steel wheels, power windows, power mirrors, A/C, heat, AM/FM
- 2004 Sterling Semi Truck, 335 HP engine, axle lock, air suspension, air ride cab, steel wheels, air brakes, A/C, heat, AM/FM, power windows, PTO
- 2001 Mack Semi Truck, Mack 400 HP, turbo diesel engine, air ride cab, air suspension, air slide 5th wheel, air brakes, heated mirrors, heat, A/C
- 2000 Sterling Kill Truck, Air brakes, dif lock, steel wheels, spring suspension, air ride cab, 50 barrel tank, Gardener Denver Triplex pump, 325 CFM cowboy CVP320 vacuum pump, no flo II flow analyzer
- 1996 Western Star Dual Axle Pole Oilfield Bed, 14.6 L Turbo Diesel engine, 425 HP, 12' L x 100" W Steel bed, 18' FT OL with Tulsa 30-ton winch, PTO, air brakes, dif. lock, air cab, air ride, seat, spring suspension, steel wheels
- 1993 Ford L7000 Swabbing Rig Semi Truck, Ford 6 cylinder turbo diesel engine, 4WD, automatic transmission, air brakes, PTO, A/C, heat, wheel lock, 75 barrel crude oil tank, 50,000 lbs, hydraulic draw
- 1991 Mack Swabbing Rig Mack EM7-300, Turbo diesel engine, 6 cylinder, Maxitorque manual transmission, spring suspension, tandem axle, air brakes, scattered rust, hole in floor board, 75 barrel crude oil tank, 50000 lbs hydraulic draw, oil saver, needs new turbo
- 1982 International Pulling Rig, 6 Cylinder 500 HP engine, tandem axle, air brakes, steel wheels, air ride seat, scattered rust, heat, A/C, 5,000' Wilson double drum pulling unit, 2-stage scoping pole, 50 LF OL, (100) string of rods, 50 ton black, (2) sets of bailing arms, weight indicator, (2) capex wash pumps
- 1978 Crane Carrier Pulling Rig, J Bird Truck, 6 Cylinder 500 HP engine, Odometer reads at 0, tandem axle, spring suspension, steel wheels, air brakes, PTO, scattered rust, ripped seat, frank double drum pulling unit, air clutch, 2-stage scoping pole, 60 FL OZ, 70 ton block, baling iron, tubing tongs, weight indicator, hydraulic legs, cat line, 8000 lbs pick up tongs

VACUUM TANKER TRAILERS

- 2011 40' Vacuum Tanker Trailer, VIN # 1P9UN-3622CK359817, tandem axle, 130 barrel capacity, steel frame, steel wheels, side tool box
- 2011 40' Tandem axle Vacuum Tanker Trailer, 130 barrel capacity, VIN # 1P9VN3621BK359811, steel frame, steel wheels, air brakes
- 2011 40' Tandem Axle Vacuum Tanker Trailer, 130 barrel capacity, steel frame, steel wheels, air brakes
- 2011 40' Tandem axle Vacuum Tanker Trailer, 130 barrel capacity, steel frame, steel wheels, air brakes
- 2008 40' Tandem Axle Vacuum Tanker Trailer, 130 barrel capacity, VIN # 1J9TA432781364241, steel frame, steel wheels, air brakes
- 2008 40' Tandem Axle Vacuum Tanker Trailer, 130 barrel capacity, VIN # 1J9TA432681364240, steel frame, steel wheels, air brake

TRAILERS

- 2012 Texas Bragg Utility Trailer, VIN # 17XFP-1822C1021687, tandem axle, wood deck, steel frame, steel wheels, spring suspension, 9995 lbs GVWR, 10400 lbs GAWR, Atlas Copco model XAS 185 air compressor, 49 HP, 2.4 L John Deere diesel engine, AXIOM sand blaster pot, S/N 24L-10233, WIWA airless paint spray system
- 1996 Fontaine 48' Drop deck wash trailer, VIN # 13N248309T1565784, tandem axle, steel frame, air brakes are locked up, Honda GX 206 North Star trash pump, 40-sack capacity hopper, 5.2" Union Triplex pump, John Deere 500 HP engine with spigter transmission
- 1994 Assembled drop neck equipment trailer, 33' tri axle, steel frame, diamond plate deck, 20' L x 8' W main deck, 5' beavertail, 31" W x 75" L ramps, 20" pin setting, steel wheels, air brakes, 32000 GVWR
- 42' Texas Pride Tandem axle gooseneck trailer, VIN # 1B9H2UGT58B624078, GVWR: 20000 lbs, GAWR: 20000 lbs, steel frame wood deck, steel wheels, 34' L x 100' W main deck, 5' beavertail, 53" L x 11" W ramps, scattered rust

WASH TANK

- 50 barrel capacity wash tank, 151" L x 89" W Steel tank, rear ladders, front step and platform, scattered rust and dents, shop built

TWO ONLINE AUCTIONS

PRSR STD MAIL
U.S. Postage
PAID
Byron Center, MI
Permit No. 19

AUCTION #1

Dependable Lease Services Asset Liquidation

TUESDAY, DECEMBER 5, 2017

15716 TX-146, Liberty, Texas 77575

AUCTION #2

Log Energy Services Asset Liquidation

WEDNESDAY, DECEMBER 6, 2017

1237 Hoover St., Luling, Texas, 78648



601 Gordon Industrial Court
Byron Center, MI 49315

REICH BROTHERS



AUCTION #1



AUCTION #1



AUCTION #2



AUCTION #2



ONLINE AUCTION TERMS:

Inspection:

AUCTION #1:

December 4 from 9am-4pm & auction day from 8am-5pm.

AUCTION #2:

December 5 from 9am-4pm & auction day from 8am-5pm.

Equipment Removal:

AUCTION #1:

- Dec. 6: 8am-5pm
- Dec. 7: 8am-5pm
- Dec. 8: 8am-5pm

AUCTION #2:

- Dec. 7: 8am-5pm
- Dec. 8: 8am-5pm
- Dec. 11: 8am-5pm

Buyer is responsible for disassembly, loading, packaging & shipping of items purchased.

Terms:

All items sell "AS IS WHERE IS" with no warranty. There shall be no guarantee or warranties

expressed or implied, statutory or otherwise as to the merchantability or fitness for any particular purchase of goods offered in this sale.

Buyers Premium:

18%. A 3% discount on the Buyers Premium is given when invoice is paid in full with cash or wire transfer.

Payment Types Accepted:

Wire Transfer, MasterCard, VISA, Discover, AMEX (Online or by phone).

****Payments exceeding \$10,000 require payment by wire transfer.****

- All foreign buyers are required to submit payment by wire transfer only.
- All payments must be in USD.

Payment Dates:

All payments are required within 2 days of auction.

AUCTION #1



AUCTION #2



AUCTION #1



AUCTION #2



AUCTION #1



AUCTION #2

