

50 ACRE ENGINEERING, TESTING AND EVALUATION CAMPUS INCLUDING  
LARGE SCALE TEST EQUIPMENT, VACUUM CHAMBERS, FACILITIES EQUIPMENT,  
MAINTENANCE PARTS, TOOLS AND SUPPORT EQUIPMENT

**BidSpotter.com**  
See Instructions on Page 4  
To Become a Qualified Bidder on the Internet

# PUBLIC AUCTION

Plant Closed - By Order of Secured Creditor

## MSE TECHNOLOGY APPLICATIONS



Former Department of Energy Facility

200 Technology Way - Butte, Montana 59702

**SALE DATE: THURSDAY, NOVEMBER 2ND, STARTING AT 9:00 AM**

**INSPECTION: WEDNESDAY, NOVEMBER 1ST FROM 10:00 AM TO 4:00 PM**



50 Acre Engineering, Testing & Evaluation Campus



Industrial Minerals Processing Plant / Raymond 6659 Roller Mill



(4) Heavy Vacuum Chamber Test & Mfg. Systems



Heavy Power Supplies & Transformers



Large Surplus Parts Inventory



Complete Maintenance Department



(2) Kaeser ASD40 Air Compressors

**CINCINNATI INDUSTRIAL AUCTIONEERS**  
auctioneers | appraisers | since 1961

Sale Under The Management Of  
**Cincinnati Industrial Auctioneers**  
2020 Dunlap St., Cincinnati, Ohio 45214  
Phone 513-241-9701 Fax 513-241-6760  
cia-auction.com | info@cia-auction.com

In Conjunction with  
**REICH BROTHERS**  
267 Central Avenue White Plains, NY 10606  
www.reichbros.com 914-614-1800



Industrial Minerals Processing Plant



\*\*Dust Collector, 53 Ton Storage Silo, 5.3M BTU/Hr. Air Heater, Blowers



\*\*Raymond Model 6659 High Side Roller Mill



MSE Built Astro Furnace Spray Casting System



\*\*Air Compressors, Controls and Electrical



128" Dia. x 64" W (Approx.) Heavy Duty Pressure Vessel Test Chamber



2,000 KVA Abbott / Sylvania Transformer Power Supply



Containerized Chilled Water System

### INDUSTRIAL MINERALS PROCESSING PLANT

Last Used to Grind Zeolites at 10 Tons Per Hour

\*\*Raymond Model 6659 High Side Roller Mill; s/n 77124, Model 50 Feeder Controller, 20,700 Lbs. / Hr. Cap., 6 Ton Surge Hopper, 200-HP Allis Drive Motor, 80 Ton Raw Storage Bin, Vibrating Bottom

\*\*Complete Infeed System; Railcar Unloading Pit, Feed Hopper with Grizzly, Conveyor and Magnet, Pennsylvania Ring Crusher with 30 HP, Approx. 100' High Bucket Elevator

\*\*Dust Collector, 53 Ton Storage Silo, 5.3M BTU/Hr. Air Heater, Blowers

\*\*Air Compressors, Controls and Electrical

See PDF File for More Specs and Photos

\*\*Subject to withdraw from auction

### VACUUM CHAMBER WASTE DISPOSAL SYSTEM

96" Dia. x 96" Wide (Approx.)

Vacuum Chamber; Components and Controls, Never Installed, Was Designed to Dispose of Ammunition, (3) 5' x 5' x 2' Crucible Trays

2,000 KVA Abbott / Sylvania Transformer Power Supply

Containerized Chilled Water System; (2) 50 HP Pumps, ALFA Heater Exchange, 425 Plastic Tank, Approx. 2,000 Gallon Stainless Steel Holding Tank

### VACUUM CHAMBER SPRAY CASTING SYSTEM

MSE Built Astro Furnace Spray Casting System; 60" Deep x 72"

Long Astro Series 1000A Graphite Furnace Chamber, Staubli Rx90-CS7 Robot, Hunterdon Halmar DPAW-1-24905 Transformer with Omega Controllers, Kinney KMBD-850-MS Vac System, Central Control Panel

### VACUUM CHAMBER SYSTEM

128" Dia. x 64" W (Approx.) Heavy Duty Pressure Vessel Test Chamber; Pumps, Controls, Related Par Systems Item No. IA-07337400-D Positioner

### ULTRA HIGH PRESSURE GAS SYSTEM

10,000 PSI Hydraulic Intensifier Load Cell

Hydro-Pac Model C45-7.5/C03-10-SYS Hydraulic Hi-Pressure Hydraulic System; with Chiller, 3,000 PSI 10-HP Pump and 5,000 PSI Pump

### PLASMA TORCH TEST STAND

Macroamp Model M4.16-23PB1200-6000DC Power Supply; s/n 8206-0195, 4,160 Volt Input, 0-600 Volt, 290-2,000 AMP

36" Dia. x 90" High Vertical Vacuum Chamber

## IMPORTANT AUCTION NOTICE

Some of the larger pieces of equipment will be sold subject to bid confirmation – See auction catalog listing on website for details

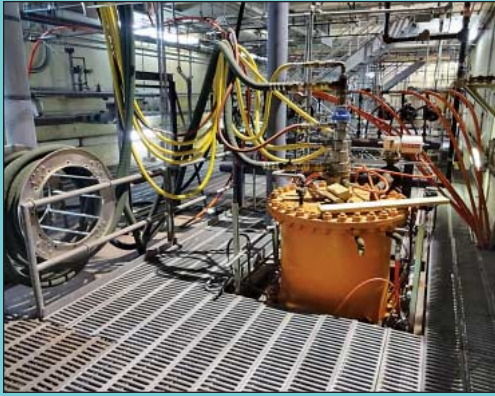


96" Dia. x 96" Wide (Approx.) Vacuum Chamber; Components and Controls





# MSE TECHNOLOGY APPLICATIONS



36" Dia. x 90" High Vertical Vacuum Chamber



Skid Mount Pump Station with 25 HP Pump and PLC Controls



Macroamp Model M4.16-23PB1200-6000DC Power Supply

Skid Mount Pump Station with 25 HP Pump and PLC Controls

### GAS NOXIDIZER SYSTEM

4' Dia. x 12' High Cyclone System with 4' x 10' High (Approx.) Tank; Stainless Steel Filters, Pumps, Absorber, Quenches

Micro-Pulse Model 12-4-100C Fabric Filter

(4) Flanders Model HP-H1-1F-GG-F6-13041F Bag-Out Housings

Pall Model 7BBD70002-123 Automated Filtration System

60 Ton (Approx.) Mcquay Model WHR060D Chiller System; s/n 5WA0180500, 30 and 35 HP compressors

North American Order GL3232-0070 Gas Valve System

PLC Control Panel

### AIR HEATING SYSTEMS

John Zink Thermal Oxidizer; s/n 917824-703

102" Dia. x 30' H (Approx.) American Schack Co. Indirect Fired Metallic Air Heater; Order No. 07722, 1,250 Degree Fahrenheit Max Temp, Preheat Temp

Process Combustion Corp 400MM BTU / Hour Industrial Air Heater; s/n MDR-0576-1

Skid Mounted Pump Systems

### COOLING TOWERS

(2) 30' x 30' Niagara Model 44029SL Heat Exchanger Cooling Towers with Gorman Rupp Pumps

Large Fiberglass Cooling Tower System w/ (2) 350-HP Gould Model VIT Size 16 X 28 Pumps

Skid Mounted Waste Water Plant w/ Filter Press

### PARTS INVENTORY

300 HP US Electrical Motors ID No. JD1250152 Electric Motor; 1,175 RPM

75 HP Gorman Rupp Model 06B20-B Pump

20 HP Portable Hydraulic Unit

Various Motor control Centers by Square D and Others

2,000 KVA Westinghouse Cat No. S202S4G Ampgard Medium Voltage MCC

Multi-Amp Model CB-7725 Voltage Regulator; s/n 25434, Ammeter Rungs 250 to 9,000

Gould Type 5HK Circuit Breaker, Rated at 4, 16 KV

Chromalox CES-012BS010-230 Natural Gas Electric Boiler, 42 Lbs. per Hour

Large Parts Inventory on (200+/-)

Skids, Shelves and Racks; Pump Assemblies to 30 HP, Gas Valves and Burner Assemblies, Pipe Valves, Flanges, Motors, Wire, Switches, Electrical, Equipment

### MAINTENANCE AND SUPPORT EQUIPMENT

(10) Pieces Late Model Greenlee Equipment

(200+) Lots Hand and Power Tools

Safety Equipment Including Respirator Systems and Related

Large Quantity Late Model Shop Equipment; Digital Platform Scales to 5' x 5', Graco Model Bulldog Pneumatic Pump, Fireproof Storage Cabinets, Racks, Shelving, 2 Ton x 10' Wide Portable a-Frame Gantry, Hotsy Diesel Fired Steam Cleaner, Rigid Tri-Stand, Table Saw, Toolboxes Loaded with Hand Tools, Step Ladders, Maple Top Benches, Mag Base Drill, Machinery Skates, 4,000 Lb. OTC Hydraulic Shop Crane, MESA Safety Gear, 2 Ton Dayton Coffing Electric Hoist with Jib, 250 Lb. Ballymove Hydraulic Work Platform, Essick Model 62BM Gas Powered Cement Mixer

15% ONSITE BUYERS PREMIUM

18% ONLINE BUYERS PREMIUM



Process Combustion Corp 400MM BTU / Hour Industrial Air Heater



10,000 PSI Hydraulic Intensifier Load Cell



## WEBCAST BIDDER INSTRUCTIONS

- **Bidders in the United States** will receive approval forms from our office upon registering for the auction on [www.bidspotter.com](http://www.bidspotter.com), pending the Auctioneers review of the information provided you will be approved at the Auctioneers discretion.
- **Bidders outside of the United States** must post a deposit of approx. 25% of their planned spending budget or \$2,500.00 minimum with Cincinnati industrial auctioneers in order to be approved to bid. Those who do not post the deposit will not be approved. **period.**



4' Dia. x 12' High Cyclone System with 4' x 10' High (Approx.) Tank



Micro-Pulse Model 12-4-100C Fabric Filter



Pall Model 7BBD70002-123 Automated Filtration System



(4) Flanders Model HP-H1-1F-GG-F6-13041F Bag-Out Housings



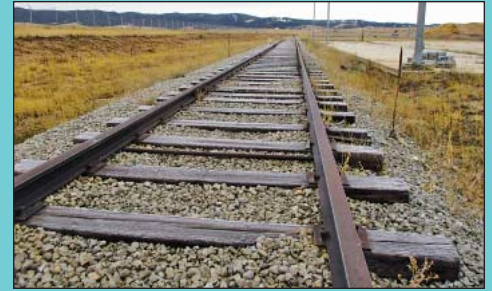
North American Order GL3232-0070 Gas Valve System



102" Dia. x 30' H (Approx.) American Schack Co. Indirect Fired Metallic Air Heater



John Zink Thermal Oxidizer



Approx. 3,600 Lineal Feet Railroad Rail w/ Approx. (775) Railroad Ties



Approx. 30,000 Cu. Yards of Topsoil to be sold as one lot

**TOP SOIL**

Approx. 30,000 Cu. Yards of Topsoil to be sold as one lot

**RAILROAD SPUR**

Approx. 3,600 Lineal Feet Railroad Rail w/ Approx. (775) Railroad Ties; Makes up approx. 1,800' of track

**FLAT RACK SHIPPING CONTAINERS**

(2) Flat Rack Shipping Containers; Rated at 99,210 Lb. Max Gross

**ELECTROMAGENT**

GMW Model 3474-140 Electromagnet; s/n 41, Max Pole Diameter 250 mm with Nozzle Magnet Assembly and Dayton Model 4Z226E Turning Magnet

(3) Chromium Steel Grid Resistor Stacks with (5) Resistors per Stack, 306 OHMS

**OVERHEAD BRIDGE CRANE**

10 Ton x 75' (Approx.) Span Crane Hoist Engineering Co. Bottom Running Overhead Bridge Crane, Bottom Running ACCO Hoist, (4) Trolleys, Remote

**CONTROL MFG. LAB**

Tegragenics Contract Mfg. and Test Lab with Circuit Board Assembly Equipment and Parts

**AIR COMPRESSORS AND RELATED**

(2) Kaeser Model ASD40 Air Compressors; s/n 1187 and 1189, 125 PSIG / 191 CFM, Siemens Sigma PLC Control (New 2007)

Kaeser Model KED 300 Air Dryer; s/n 1314821-1, 300 SCFM at 100 PSIG

20 HP Gardner Denver Horizontal Tank Electro-Screw Air Compressor; s/n 719458

1500 and 1,500 Gallon Mueller Vertical Air Receiving Tanks

**TEST EQUIPMENT**

48" x 96" Kinetic Systems Model 5108T-4896-21 Precision Layout Table; s/n 500-3017, Drilled and Tapped Top

48" x 72" Kinetic Systems Model 5108T-4872-21 Precision Layout Table; s/n 500-3018, Drilled and Tapped Top

48" x 72" x 12" Thick Roc-Of-Ages Granite Surface Plate

24" x 48" Labonco Protector Fume Hood

Misc. Test and Inspection Tools and Equipment

**WELDING AND RELATED**

350 Amp Lincoln Square Wave TIG-355 Tig Welder

300 Amp Miller Millermatic 350P Stick Welder

200 Amp Miller Vintage Wire Feed Welder

300 Amp Lincoln Model TIG 300/300 Tig Welder

(2) Miller Model Watermate 1A Coolers

Hypertherm Max 100 Plasma Cutter

Thermadyne Model 51 Plasma Cutter

Nederman Fume Collector

Welding Accessories Including; Approx. 50 C-Clamps, Vise Grip Clamps, Welding Tables, Welding Wire, Acetylene Outfit, Gages, Regulators and Other Related Items

**LARGE SCRAP OPPORTUNITY**



GMW Model 3474-140 Electromagnet



(2) 4' X 8' X 6' Kinetic Systems Layout Tables



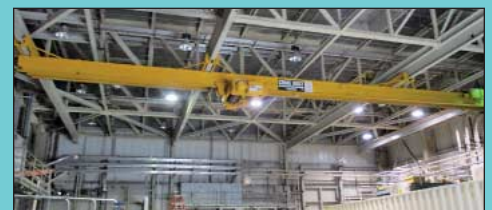
(2) Flat Rack Shipping Containers



Various Control Panels



60 Ton (Approx.) Mcquay Model WHR060D Chiller System



10 Ton x 75' (Approx.) Span Crane Hoist Engineering Co. Bottom Running Overhead Bridge Crane



# THURSDAY, NOVEMBER 2ND



Forklifts, Trucks, Man Lifts & Maintenance Vehicles



Maintenance Tools, Welders, Hand Tools & Related



Job Boxes, Die Lifts, Steam Cleaners



Machine Tools, Lathes, Welders, Shop Equipment



(200+) Skids, Surplus Parts, Motors, Pumps, Valves



Large Parts Inventory Motors, Waste Water, Boiler

## TOOLROOM MACHINERY

**16" x 48" Monarch Model EE Geared Head Engine Lathe;** s/n 44987, 20-2,000 RPM, Taper Attachment, 12" Chuck, Spindle Motor, Load and RPM Read Outs (1961)

**14" x 40" Jet Model 1440-3PGH Geared Head Engine Lathe;** s/n JL139

**12" x 36" Enco Model 82070 Toolroom Lathe;** s/n 844294

**36" Tannewitz Vertical Band Saw;** s/n 79129, 36" x 36" Table

**16" Central Model 981 Drilling and Milling Machine**

**7" x 12" MSC Horizontal Band Saw;** s/n 200209

**4-1/2" x 8" Sears Horizontal Band Saw;** s/n 11168

**Ridgid Model 535 Powered Threader;** s/n 404523

**Ridgid Model 300 Powered Pipe Threader**

**Zero Model BNP-210-1 Blast Cabinet;** s/n 22156, with Dust Collector

## Other Toolroom Equipment

**Including:** 25 Ton Dake H-Frame Press, jet JSG-6 Disc Sander, 1" foley Belt Sander, 2" Belt, 1" Wheel Combination Rockwell Grinder, (4) Other DE Pedestal Grinders

## VEHICLES AND TRAILERS

**2008 Ford F150XL 5.4 Triton Crew Cab Pick Up Truck;** VIN # 1FTPX14V98FB06946, 4-Wheel Drive, Auto Transmission, AC, CD Player, 5 Liter Gas Engine, 48,144 Miles

**1993 Chevy Mechanics Bed / Snow Plow Truck;** VIN # 1GBGK24K1PE244385, Western Multi Position V Type Hydraulic Snow Plow, Stahl Mechanics Bed, 4-Wheel Drive, Automatic Transmission, 106,960 Miles

**2008 Ford Escape 4-Door SUV;** VIN # 1FMCU92799KA13939, 4-Wheel Drive, Automatic Transmission, CD Player, 85,887 Miles

**1990 Ford F250 Full Size Pick Up Truck;** VIN # 1FTHF25M8LPA60760, 5-Speed Manual Transmission, Diesel Engine, 80,219 Miles

**16' Dressen Tandem Axle Trailer;** 2" Ball Hitch, Wood Deck, Ramps

**12' Load Truck Single Axle Trailer;** 2" Ball Hitch, Steel Deck

## FORK LIFTS, TRACTORS, MAN LIFTS AND RELATED

**9,000 Lb. Toyota Model FG45 LP Gas Pneumatic Tire Lift Truck;** s/n FG45-10409, 3-Stage Mast, Side Shift, 84" Mast Height, 60" Forks, 1,603 Hours

**5,000 Lb. Hyster Model S50E LP Gas Cushion Tire Lift Truck;** s/n 0002-002942x, 3-Stage Mast, 150" Lift, 82" Mast, Side Shift, 5,964 Hours

**JLG Model 45HA Snorkel Lift;** 500 Lb. Basket Capacity, 2,920 Hours, Dual Fuel / LP and Gasoline

**John Deere Model F1145 Multi-Purpose Tractor;** 60" Front Mount Mower Deck, 54" Snow Blade, 60" Brush Attachment, 3 Cylinder Diesel Engine, 1,749 Hours

**Yamaha Model 350 4-Wheel Drive ATV**

**Barret Model WC-30-TL Walk Behind Electric Lift**

**Presto and Multi-Ton Die Lifts**

# PUBLIC AUCTION

50 ACRE ENGINEERING, TESTING AND EVALUATION CAMPUS INCLUDING LARGE SCALE TEST EQUIPMENT, VACUUM CHAMBERS, FACILITIES EQUIPMENT, MAINTENANCE PARTS, TOOLS AND SUPPORT EQUIPMENT

Plant Closed - By Order of Secured Creditor

## MSE TECHNOLOGY APPLICATIONS

Former Department of Energy Facility  
200 Technology Way - Butte, Montana 59702

**SALE DATE:**  
**Thursday, November 2nd**  
**STARTING AT 9:00 AM**

**INSPECTION:**  
**Wednesday, November 1st**  
**10:00 AM to 4:00 PM**



CINCINNATI  
**INDUSTRIAL AUCTIONEERS**

Contact Information  
2020 Dunlap St.  
Cincinnati, Ohio 45214  
Phone 513-241-9701  
Fax 513-241-6760  
www.cia-auction.com



50 Acre Engineering, Testing & Evaluation Campus



Vacuum Chambers



Maint. & Facilities Equipment

FIRST CLASS MAIL!

PRE-SORT  
FIRST CLASS  
U.S. POSTAGE  
**PAID**  
CINCINNATI, OHIO  
PERMIT NO. 3593



### Important Mail

TO BE DIRECTED TO THE ATTENTION  
OF EXECUTIVE PERSONNEL

**THURSDAY, NOVEMBER 2ND**

# PUBLIC AUCTION

Plant Closed - By Order of Secured Creditor

## MSE TECHNOLOGY APPLICATIONS

Former Department of Energy Facility

200 Technology Way  
Butte, Montana 59702

### IMPORTANT NOTICE:

Although information has been obtained from sources deemed reliable, the auctioneer makes no warranty or guarantee, expressed or implied, as to the accuracy of the information herein contained. It is for this reason that buyers should avail themselves of the opportunity to make inspection prior to the sale. This brochure is intended to provide general information of the equipment being offered and is subject to errors, omissions, additions or deletions. Please check with the Auctioneer's Office for a final listing. Items offered may or may not necessarily be sold as described and/or photographed in this brochure.

MAIL BIDS ACCEPTED WITH A 25% DEPOSIT

### DIRECTIONS

Use GPS for best results

### TERMS OF SALE

All equipment described herein will be sold "as is", "where is" to the highest bidder or bidders for cash in accordance with our regular terms and conditions of sale. Unless other satisfactory arrangements are made, a **25% deposit** in cash, certified or cashier's check payable to Cincinnati Industrial Auctioneers, Inc., is **required on all purchases**. Firm and personal checks accepted only if accompanied by a letter from your bank guaranteeing your funds. All sales are subject to state and/or local taxes unless a signed exemption form is presented at the time of purchase. **All balances are due at the conclusion of the sale.** No merchandise may be removed while the sale is in progress. **All bidders must comply with our Standard Terms of Sale**, copies of which will be available at the sale site or can be obtained from our website.

**15% ONSITE BUYER'S PREMIUM**  
**18% ONLINE BUYER'S PREMIUM**

### AUCTIONEERS

Jeffrey L. Luggen  
Joseph M. Luggen  
Frank J. Rome  
John F. Rome



CINCINNATI  
**INDUSTRIAL AUCTIONEERS**

auctioneers | appraisers | since 1961

Sale Under The Management Of  
**Cincinnati Industrial Auctioneers**  
2020 Dunlap St., Cincinnati, Ohio 45214  
Phone 513-241-9701 Fax 513-241-6760  
cia-auction.com | info@cia-auction.com

In Conjunction with

**REICH BROTHERS**

267 Central Avenue White Plains, NY 10606  
www.reichbros.com 914-614-1800